



@Fairhaven Bible Chapel



SATURDAY – MARCH 2ND

When: Pre-Race Inspection and Registration – 9:00AM to 11:00AM
Races begin at 11:00AM

Who: T&T (grade 3) clubbers to adults
Family is invited to come out to watch!
Fairhaven Bible Chapel and Delisle Community Chapel

Where: Fairhaven Bible Chapel, 3503 Fairlight Drive in Saskatoon

Cost: \$7 to purchase Grand Prix race kit, \$3 registration fee (\$10 total)
Concession available on Race Day (treats, drinks and hot dogs)
Proceeds to go to improving the Grand Prix race track.

What is the AWANA Grand Prix?

The **Awana Grand Prix** is a family-oriented affair that allows clubbers to express their creativity and building skills by racing their own wooden Grand Prix cars while enabling clubs to share God's plan of salvation with clubbers and family members while attending a fun event.

The cars race on a four-lane track.

Awards will be given out for Design and Speed.

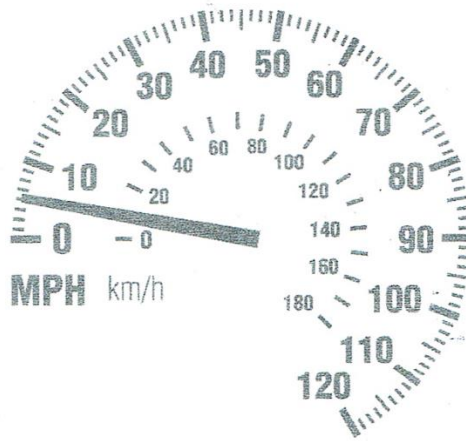
Club awards first, second and third place trophies for each category.

Clubbers that need a hand building their cars should contact their Awana Commander.

Awana Grand Prix Rules from the Awana Grand Prix Rulebook

RACING SPECIFICATIONS

1. **Overall length cannot exceed 7"**.
2. **Overall width cannot exceed 2 $\frac{3}{4}$ "**.
3. **Overall height cannot exceed 3"** in order not to interfere with the Awana Grand Prix finish-line detector.
4. **The distance between the wheels (side to side) cannot be less than 1 $\frac{3}{4}$ "** or the car will not fit on the track.
5. **Car weight shall not exceed 5 oz.**
Weight may be added to lighter cars by hollowing out cavities and inserting lead or another metal. Such additions must be built securely into the car.
6. Wheel bearings, bushings, washers and springs are prohibited.
7. Addition of decals, driver, steering wheel, car trim, accessories and painting is permitted as long as they do not cause car to exceed specified dimensions or weight.
8. Starting devices are prohibited. Car must be freewheeling.
9. Car must pass inspection by Awana Grand Prix Inspector(s) in categories of weight, length, width, height and other specifics mentioned in the instruction booklet. Inspectors may send cars to the repair station if there is any question about meeting these standards.
10. To prevent bottom of car from rubbing on the lane strips, be sure clearance is $\frac{3}{8}$ " minimum.
11. At the start of a race, the entire car must stage behind the starting pin. No part of the car should extend over the top of the starting pin.



Racing is Saturday, March 2nd, 2019 from 11am – 1pm.

Come early to register and have your vehicles inspected.